

Task: Cell Structure

The diagrams below show the main parts of a plant and an animal cell. Explore each part of the animal and plant cells and explain its function.



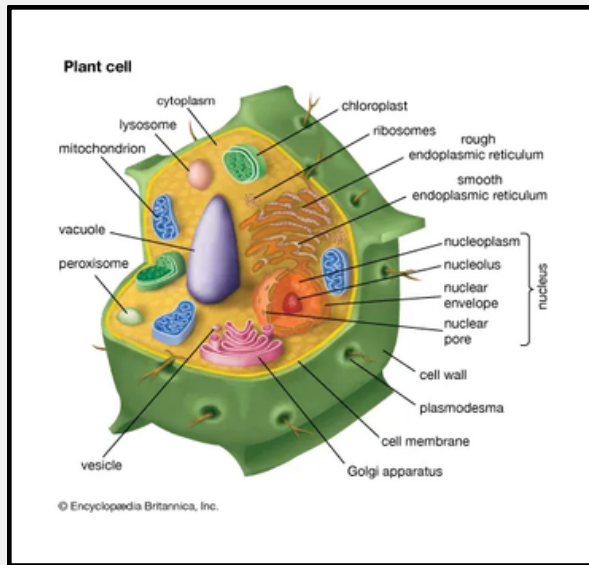
Tip: Use the Britannica School "Cell" article to help you fill in the boxes. Scroll to the article section about Cell Structure.

Mitochondria

Golgi

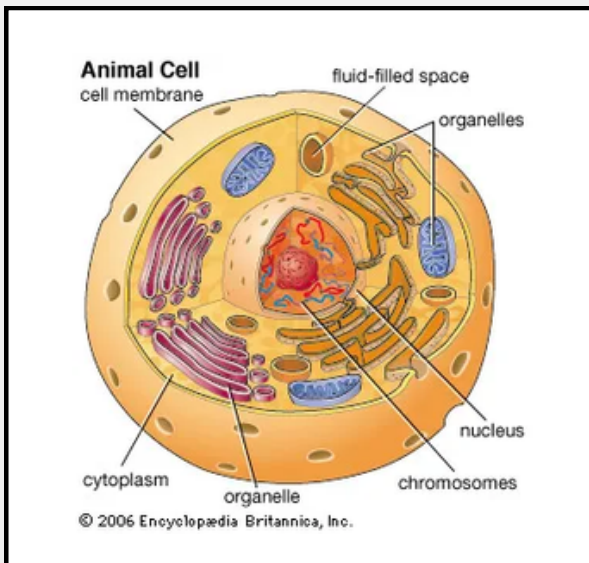
Vacuoles

Nucleus



Cytoskeleton

Lysosome



Ribosomes

Cell Wall or Cell Membrane