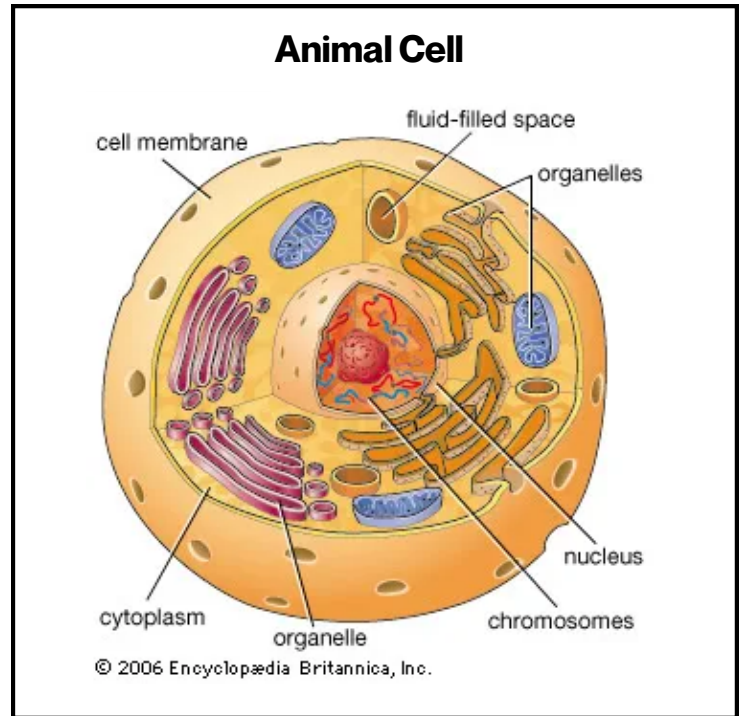
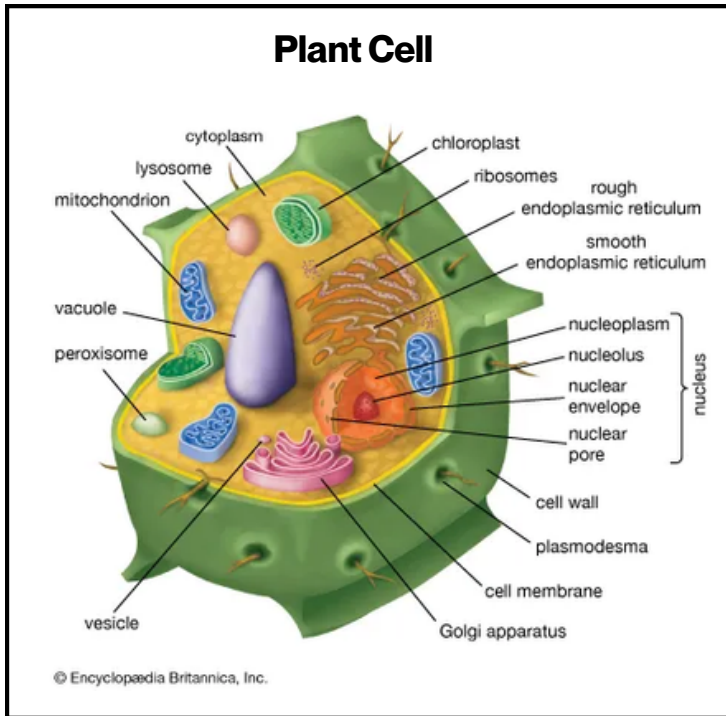


Task: Parts of a Cell

The diagrams below show the main parts of a plant and an animal cell. Using the diagrams and the articles in the Britannica School "Living Things" resource pack, explain the function of each part.



Tip: Use the Britannica School "Cell" article to help you fill in the boxes. Scroll to the article section about Parts of a Cell.



Nucleus

Cell Membrane (Animal)

Cell Wall (Plant)

Chromosomes